



Principles of Biomedical Science

Virtual Learning

9-12 / PLTW[®] PBS

May 15, 2020



Principles of Biomedical Science

9-12/PLTW[®] PBS

Lesson: May 15, 2020

Objective/Learning Target:

Students will be able to: identify and explain basic morphology, structure and characteristics of Bacteria. (*Reference: PLTW[®] 5.1.4 Gram Staining Part I Bacteria Morphology*)



Let's Get Started (Bell Ringer):

Watch the following Vides:

[Bozeman Science Bacteria](#)

[Microbiology - Bacteria \(Structure\)](#)



Lesson/Activity:

Let's start by, Drawing and labeling a diagram of a bacterial cell in your laboratory journal, notebook, or separate piece of paper. Use this website to help you. [GlycoPedia Main Features of the Bacterial Cell Wall](#) Use colored pencils or pens to make your picture pop. Include the following (8) cellular parts on your diagram:

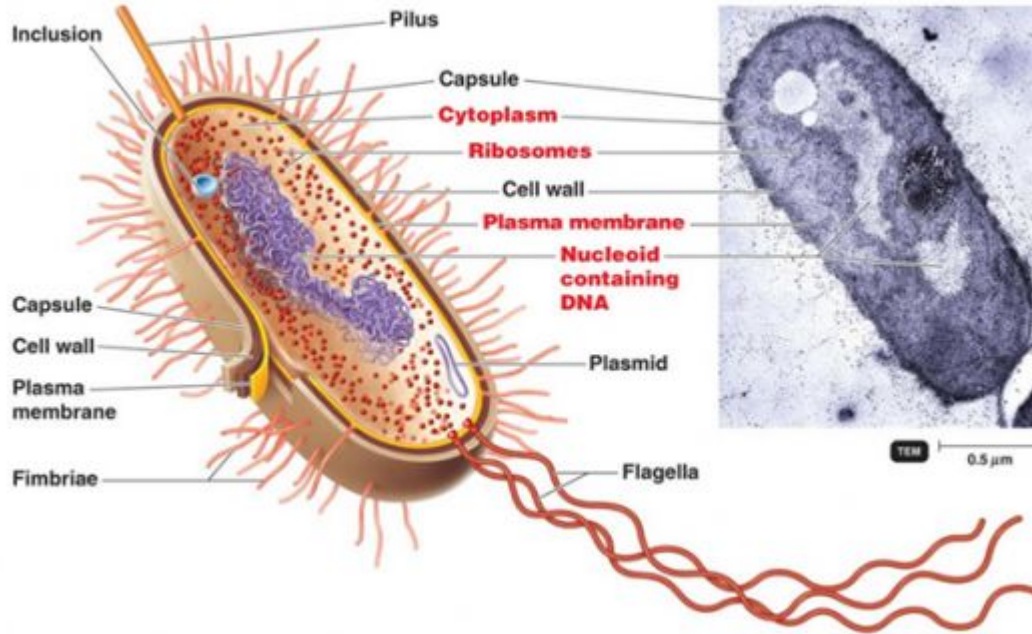
Nucleoid
Capsule

Plasmid
Flagella

Ribosomes
Pili

Cell wall
Plasma membrane

Answers:





Lesson/Activity continued:

Create flash cards containing a description of each labeled component on the drawing.

Nucleoid

Plasmid

Ribosomes

Cell wall

Capsule

Flagella

Pili

Plasma membrane

Use the following web site if you need help with your vocabulary terms.

[Vocabulary.com Cell Structure](https://www.vocabulary.com/Cell-Structure)



Answers:

All definitions to all terms are located at
<https://www.vocabulary.com/lists/97776>



Practice:

Explore online and find (3) amazing resources that helped you in understanding the basic morphology, of Bacteria. Keep this list in you notebook, lab journal, or on a separate piece of paper and share with your teacher.



Answers:

Answers will vary on student own research and knowledge.



Additional Practice:

Lets see what you remember from what you have been doing?
Take the quiz from:

[Cells Alive - Quiz 2 Microbes](#)

[Quizizz Bacteria Morphology and Viruses](#)

[Bacterial Cell Morphology and Classification: Definition, Shapes & Arrangements](#)

[ProProfs It's All About A Bacterial Cell!](#)



Answers:

Answers are given after Quiz